

GILDAN®



85900



Premium Cotton Adult Long Sleeve Double Pique Polo

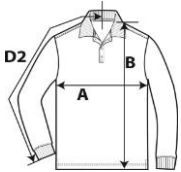
DETAILS

Weight
Content
Features

223.0 G/SqM (White 214.0 G/SqM)
100% Combed Ring Spun Cotton
Eurofit - sleeker fit in shoulder and sleeve
Sideseamed with side vents
Contoured welt collar and cuffs
Pad printed neck label and double-satin shoulder label
Rolled forward topstitched shoulder
Clean finished placket with reinforced bottom box
3 colour-matched buttons
Twin needle bottom hem

Sizes
Case Packs
Colours
SKU's

S-3XL
S - 3XL 36 PIECES
6
36



SPECIFICATIONS

| | Tol- | Tol+ | S | M | L | XL | 2XL | 3XL |
|---|-------|-------|--------|--------|--------|--------|--------|--------|
| Centimeters | | | | | | | | |
| Chest (A) | 1.270 | 1.270 | 50.038 | 53.340 | 55.880 | 58.928 | 61.976 | 66.040 |
| Length from HPS (B) | 2.540 | 2.540 | 70.510 | 73.660 | 77.470 | 81.280 | 84.506 | 87.376 |
| Sleeve length (centre back) (D2) | 1.270 | 1.270 | 82.550 | 85.090 | 87.376 | 89.916 | 92.456 | 94.996 |
| Inches | | | | | | | | |
| Chest (A) | 0.500 | 0.500 | 19.700 | 21.000 | 22.000 | 23.200 | 24.400 | 26.000 |
| Length from HPS (B) | 1.000 | 1.000 | 27.760 | 29.000 | 30.500 | 32.000 | 33.270 | 34.400 |
| Sleeve length (centre back) (D2) | 0.500 | 0.500 | 32.500 | 33.500 | 34.400 | 35.400 | 36.400 | 37.400 |

S-3XL

| COLOURS | Code | Comments |
|----------------------|------|---------------------------|
| Black | 036 | |
| Navy | 032 | |
| Red | 040 | |
| Ring Spun Sport Grey | 295 | 90% Cotton, 10% Polyester |
| Royal | 051 | |
| White | 030 | |

CHANGES

Total Net Change 0 SKU's