

KARIBAN

REFERENCE : K416

SIZES : S_M_L_XL_XXL_3XL_4XL

COMPOSITION :

Main fabric : 3 layers Softshell (Knitted fabric/Knitted fabric)
Polyester - 250 .

Main fabric : 3 layers Softshell (Knitted fabric/Knitted fabric)
Polyester - 250 For contrasted yokes

Lining : Polyester polytricot - 120 50D Polytricot
For inner collar and pocket sack. 100%polyester

Lining : Polyester polytricot - 120 50D Polytricot
For front lining 100%polyester

Fabric 3 : Polyester / Elastane Single jersey 92/8 - 180 For
concealed cuff 92%polyester/8%elastane

WEIGHT :

Main fabric : 250 gsm

Main fabric : 250 gsm

Lining : 120 gsm

Lining : 120 gsm

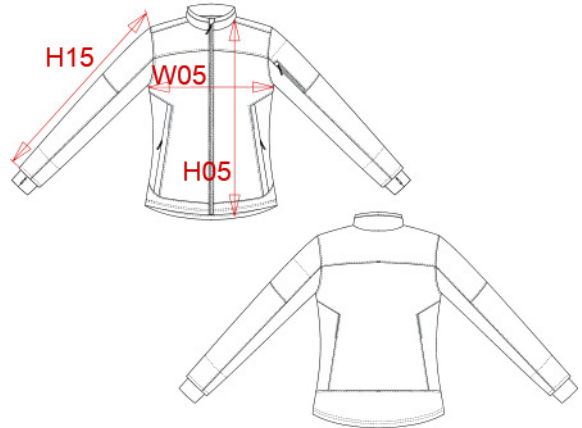
Fabric 3 : 180 gsm

TECHNICAL DETAIL :

Ladies' bicolor softshell jacket BR: 5000gsm/24h / WP: 5000mm

ARTICLE WEIGHT :

500 gr/pc



DESCRIPTION
Français : Veste softshell bicolore femme
English : Ladies' bicolor softshell jacket
Nederlands :
Deutsch : ZWEIFARBIGE DAMEN SOFTSHELL JACKE
Español : Chaqueta softshell bicolor para mujer
Italiano : GIACCA SOFTSHELL BICOLORE DA DONNA
Português : Blusão Softshell de senhora bicolor

COLORS	PANTONE SERIGRAPHIE
Aqua blue / Black	7690C / Black
Titanium / Black	7540C / Black
White / Titanium	White / 7540C

MEASUREMENT							
Description	S	M	L	XL	XXL	3XL	4XL
H05 (L) Hauteur totale / Total height	63,75	65,25	66,75	68,25	69,75	71,25	73,50
W05 1/2 largeur poitrine / 1/2 chest width	47	49	51	53	55	57	60
H15 Longueur manche / Sleeve length	61,50	62,50	63,50	64,50	65,50	66,50	68

CARE LABEL

PACKING	
Box	10 pcs / box S-M => L:48cm W:36cm H:18cm GW:6.00kg NW:5.00kg L-XL => L:52cm W:37cm H:18cm GW:6.40kg NW:5.50kg XXL-4XL => L:57cm W:39cm H:18cm GW:7.00kg NW:6.00kg