

KARIBAN

REFERENCE : K532

SIZES : XS_S_M_L_XL_XXL

COMPOSITION :

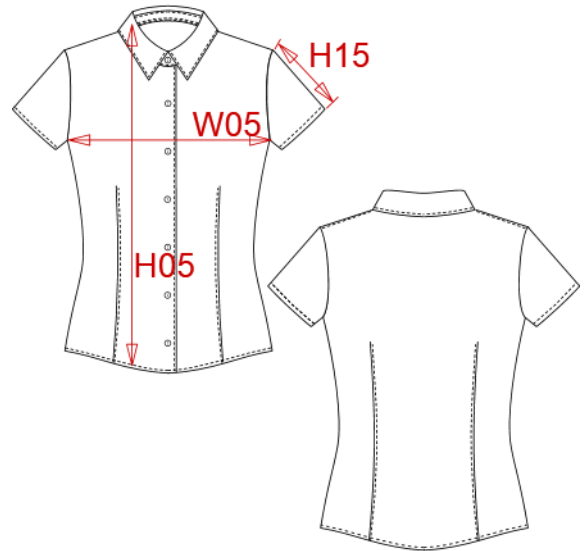
Main fabric : Cotton / Elastane poplin 97/3 - 120 97%cotton / 3%elastane

WEIGHT :

Main fabric : 120 gsm

ARTICLE WEIGHT :

190 gr/pc



DESCRIPTION
Français : Chemise femme manches courtes
English : Ladies short sleeve easy care stretch shirt
Nederlands : Dames blouse met korte mouwen
Deutsch : Pflegeleichte damen kurzarm stretch-bluse
Español : Camisa de manga corta para mujer
Italiano : Camicia donna maniche corte
Português : Camisa de senhora manga curta em stretch e tratamento fácil

COLORS	PANTONE SERIGRAPHIE
White	White
Black	Black
Zinc	447C
Light blue	544C
Navy	433C
Wine	504C

MEASUREMENT						
Description	XS	S	M	L	XL	2XL
H05 (L) Hauteur totale / Total height	63	65	67	69	71	73
W05 1/2 largeur poitrine / 1/2 chest width	42	45	48	51	54	57
H15 Longueur manche / Sleeve length	14,50	15,25	16	16,75	17,50	18,25

CARE LABEL

PACKING	
Box	12 pcs / box XS => L:52cm W:34cm H:20cm GW:3.00kg NW:1.70kg S => L:52cm W:34cm H:20cm GW:3.20kg NW:1.90kg M => L:52cm W:34cm H:20cm GW:3.40kg NW:2.10kg L => L:52cm W:34cm H:20cm GW:3.60kg NW:2.30kg XL => L:52cm W:34cm H:20cm GW:3.80kg NW:2.50kg XXL => L:52cm W:34cm H:20cm GW:4.00kg NW:2.70kg