

PROACT.®

REFERENCE : PA343

SIZES : XS_S_M_L_XL_XXL

COMPOSITION :

Main fabric : Polyester diamond cool dry -100 Main fabric for body, sleeve vest, big pocket sacks, front & back facing & neckline loop. 100%polyester

Lining 1 : Mesh 65 Inner body of vest & small pocket sack vest. 100%polyester

Lining : Polyester taffeta 190T - 60 For inner sleeve of vest 100%polyester

WEIGHT :

Main fabric : 100 gsm

Lining 1 : 65 gsm

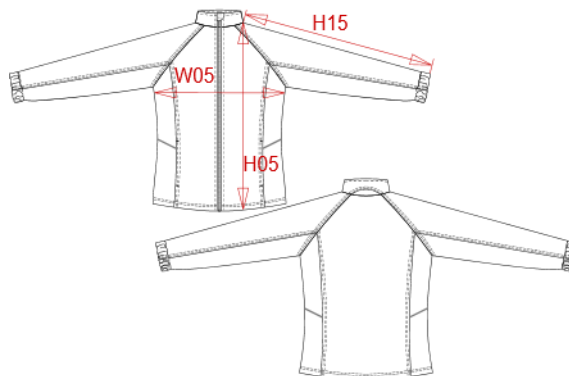
Lining : 60 gsm

TECHNICAL DETAIL :

Quick dry fabri

ARTICLE WEIGHT :

295 gr/pc



DESCRIPTION	
Français :	Veste de survêtement femme
English :	Ladies' track top
Nederlands :	Dames trainingsjas
Deutsch :	DAMEN TRAININGSJACKE
Español :	Chaqueta de chándal para mujer
Italiano :	GIUBBOTTO DONNA
Português :	Casaco de fato de treino de senhora

COLORS	PANTONE SERIGRAPHIE
Black	Black
Navy	433C
White	White

MEASUREMENT							
Description	XS	S	M	L	XL	XXL	
H05 (L) Hauteur totale / Total height	68,30	69,80	71,30	72,80	74,30	76,50	
W05 (L) 1/2 largeur poitrine / 1/2 chest width	48	50	52	54	56	59	
H15L (L) Longueur manche longue / Long sleeve length	73	75	77	79	81	83	

CARE LABEL				

PACKING	
Box	30 pcs / box All sizes => L:60cm W:40cm H:13cm GW:4.50kg NW:3.50kg