

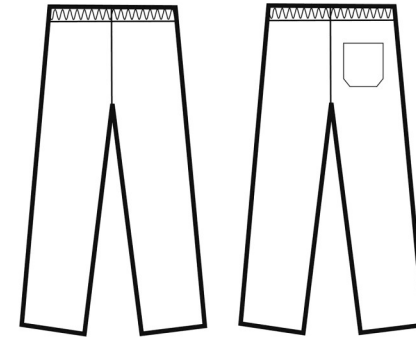
PR552

PULL ON CHEF'S TROUSER

CARTON	PACK	NO. SKU'S
24	6	12



Colour	Pantone	C	M	Y	K
Black	Black	0	0	0	100
Navy	2766	100	87	0	34
White	0	0	0	0	0



Fabric

65% Polyester, 35% Cotton yarn dyed woven check. 195gsm

Colours Navy/White Check, Black/White Check

Sizes XS, S, M, L, XL, 2XL

Features

- Easycare fabric
- Elasticated waist
- Unisex sizing
- Rear patch pocket
- Zip fly
- 30.5"/77cm inside leg

Country of Origin China

Carton Dimensions 61cm x 42cm x 22cm

Carton Weight 10.30kg approx.

VAT Code 6203 43 1100

Size	XS	S	M	L	XL	2XL
Waist to fit "	28-30	32-34	34-36	36-38	38-40	42-44
Waist to fit cm	71-76	81-86	86-91	91-96	96-101	106-111
Waist actual cm	72	84	96	108	120	132
DE,NL	36	38	42	44	46	50
FR,ES,PT	36	38	42	44	46	50
IT	42	44	46	48	50	52

Marketing Description

A traditional chef's trouser available in two popular colourways. An easy-wearing comfortable pull-on style with an elasticated waist and zip fly. There is a useful rear patch pocket.



INDUSTRIAL LAUNDERING 85°C MAXIMUM