

PR621**LADIES' HOSPITALITY WAISTCOAT**

CARTON	PACK	NO. SKU'S
24	6	5

**Fabric**

65% Polyester, 35% Cotton twill. 195gsm

Colours

Black,

Sizes

S, M, L, XL, 2XL

Features

- Ladies' easy care waistcoat
- Contemporary style four button waistcoat
- Two functional watch pockets
- Complements men's PR620

Country of Origin

China

Carton Dimensions

60cm x 40cm x 22cm

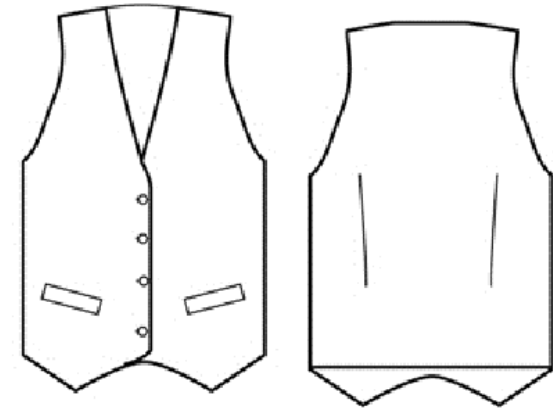
Carton Weight

10kg approx.

VAT Code

6211 43 1000

Colour	Pantone	C	M	Y	K
Black	Black	0	0	0	100



Size	S	M	L	XL	2XL
Dress size	8	10	12	14	16
Bust to fit"	34	38	42	46	50
Bust to fit cm	86	96	106	116	126
Bust actual cm	88	96	104	112	120
DE,NL	36	40	44	48	52
FR,ES,PT	36	40	44	48	52
IT	40	44	48	52	56
Back length cm	55	55	55	55	55

Marketing Description

A ladies' hospitality waistcoat with contemporary four button fastening and two functional watch pockets. This waistcoat is great for those who require a more smart and formal approach to service uniforms and it looks great when teamed with a Premier blouse and complementing tie.



INDUSTRIAL LAUNDERING 85°C MAXIMUM